

Ginger Snaps

PHOTOGRAPHY

PRINTS & PRODUCTS GUIDE



TABLE OF CONTENTS

Page 1 - [INTRO TO PROFESSIONAL PRINTS](#)

Page 2 - 3 - [SUPERIOR PRINT PRICING](#)

Page 4 - [PROOF PRINT PRICING](#)

Page 5 - [EXCLUSIVE PROOF PRICING FOR DIGITAL COLLECTION CLIENTS](#)

Page 6 - 10 - [FRAMING & MAT PRICING](#)

Page 11 - [KEEPSAKE ITEMS](#)

Page 12 - [CARDS](#)

Page 13 - [FREQUENTLY ASKED QUESTIONS](#)

Page 14 - [GLOSSARY OF PRINT TERMS](#)

Page 15 - [ORDER FORM](#)



GINGERSNAPS PROFESSIONAL PRINTS

I proudly use one of the **top professional labs in the country** for all my Prints, Mounted Enlargements, Canvases, Keepsakes & Cards. My lab utilizes top, professional-grade materials and leading print process. The quality is superior to consumer labs resulting in beautiful, archival prints!

I offer two print lines: Superior Prints and Proof Prints
Superior Prints receive **additional editing and retouching** to perfect the image for display in your home.

I've already done a nice edit to all the proofs presented in your online gallery, so **Proof Prints** are the same exceptional print quality without the extra editing and retouching of the Superior line.

I also offer **Exclusive Access & Pricing for Digital Collection Clients**.
 You have access to print your digital files at my lab, so you receive professional quality prints at a great price, ensuring you get the most out of your investment!

SUPERIOR PRINT LINE

Superior Prints receive **additional editing & retouching** to perfect the image for display in your home.

I spend ~30+ minutes on each print making extra adjustments such as: removing people & distractions from the background, skin smoothing & blemish removal, retouching hair, as well as shadow softening and enhancing the colors even further.

Extensive Retouching is also available for a fee.

Superior Prints can be ordered in Color or Black & White.

PRINTS

4x6	5x7	8x10	11x14
\$13	\$15	\$35	\$65

SMOOTH MOUNT

11x14	12x18	16x20	20x24	24x36
\$100	\$135	\$175	\$225	\$325

FINE ART CANVAS MOUNT

11x14	12x18	16x20	20x24	24x36
\$195	\$235	\$285	\$345	\$455

STRETCHED CANVAS

8x10	11x14	16x20	20x24	20x30	24x36	30x40	40x60
\$150	\$245	\$295	\$365	\$445	\$545	\$645	\$895

*Please note that I do not provide extensive retouching or superior print editing for digital files.
My time spent editing and retouching Superior Prints is a perk of ordering from GingerSnaps rather than elsewhere.*

SUPERIOR PRINT LINE: EXTRA OPTIONS

EXTENSIVE RETOUCHING

Extensive Retouching is available upon request for a fee.

These options include: head-swapping (using someone's face from another image), glasses tint removal, braces removal & slimming. I'm a photoshop pro, so please ask if there's something else you're interested in having done!

Pricing is per person and only charged one time for an image.

head-swap

\$15

glasses tint removal

\$10

braces removal

\$10

slimming

\$15

Please note that I do not provide extensive retouching or superior print editing for digital files or Proof Prints. My time spent editing and retouching Superior Prints is a perk of ordering from me rather than elsewhere.

PROOF PRINT LINE

Take advantage of my exceptional lab and fast turnaround with Proof Prints. Not every image needs all the bells & whistles retouching of my Superior Print Line. I've already done a nice edit to every proof presented in your online gallery, and my Proof Print Line is printed just as shown with no extra editing/retouching.

Proof Prints can be ordered in Color or Black & White.

PRINTS

4x6	5x7	8x10	11x14
\$5	\$7	\$20	\$40

SMOOTH MOUNT

11x14	12x18	16x20
\$75	\$110	\$145

STRETCHED CANVAS

11x14	16x20	20x24	20x30
\$200	\$250	\$325	\$400

WALLETS

set of 8	set of 56
\$12	\$50

Please note that I will crop and sharpen the image for print, however no further editing, retouching or alterations will be made to our Proof Prints.

DIGITAL COLLECTION CLIENTS

(Digital Collection Clients have booked a Digital Session or purchased the Digital Collection)

I want you to get the very most out of your digital file investment!
Don't settle for inferior, consumer-lab quality & eliminate
the guess-work of finding a place to print.

Instead, I give you **exclusive pricing** on Proof Prints so you can
easily **order from my Professional Lab!**

I'll be your order liaison: cropping, shipping, and handling communication with my lab.

This guarantees you receive the **highest caliber prints & service** and
ensures my work is shown in it's best light.

(Pricing is for Proof Prints; they are printed directly from your digital files with no further editing or retouching. If you would like extra editing/retouching to your prints please refer to my Superior Print Line.)

PRINTS

4x6
\$2

5x7
\$3

8x10
\$7

11x14
\$16

SMOOTH MOUNT

11x14
\$50

12x18
\$65

16x20
\$85

20x24
\$115

STRETCHED CANVAS

8x10
\$100

11x14
\$135

16x20
\$170

20x24
\$200

20x30
\$225

24x36
\$275

30x40
\$350

40x60
\$550

Please note that I do not provide extensive retouching or superior print editing for digital files or any of the products/pricing on this page. My time spent editing and retouching is a perk of ordering from my Superior Print Line.

FRAMING

Add a beautiful, **handcrafted frame** to your Superior Print!

Available on my Smooth Mount and Fine Art Canvas Mounts sizes 11x14 to 20x24.
Your print will be professionally framed with kraft paper backing and wire hanger,
so it's ready to hang the day it arrives!

Pricing is for frame & professional assembly; print cost is not included.

Outer Banks Premier Frame 3.25" Moulding

11x14
\$140

12x18
\$165

16x20
\$185

20x24
\$225



aged umber



aged grey



Frame Group A

11x14
\$105

12x18
\$125

16x20
\$140

20x24
\$175

Nags Head Frame 1.75" Moulding



aged umber



aged grey



Corolla Frame 2.75" Moulding

raisin



toffee



Frame Group B

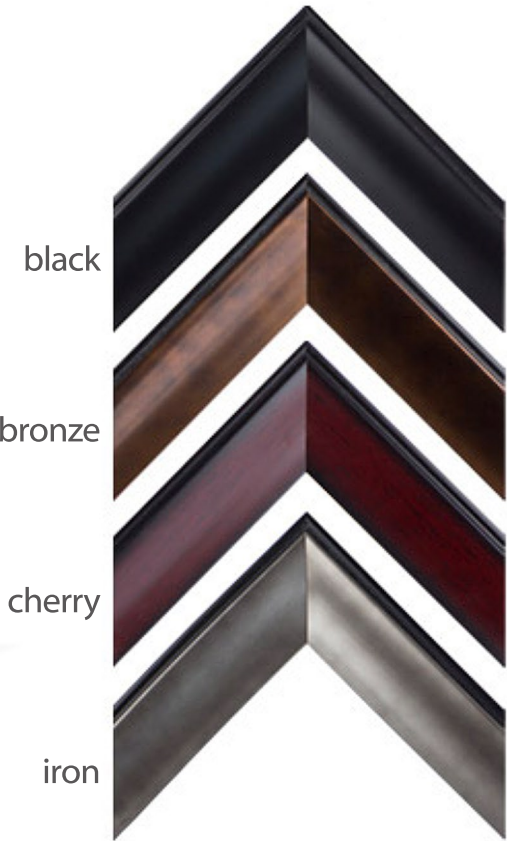
11x14
\$95

12x18
\$115

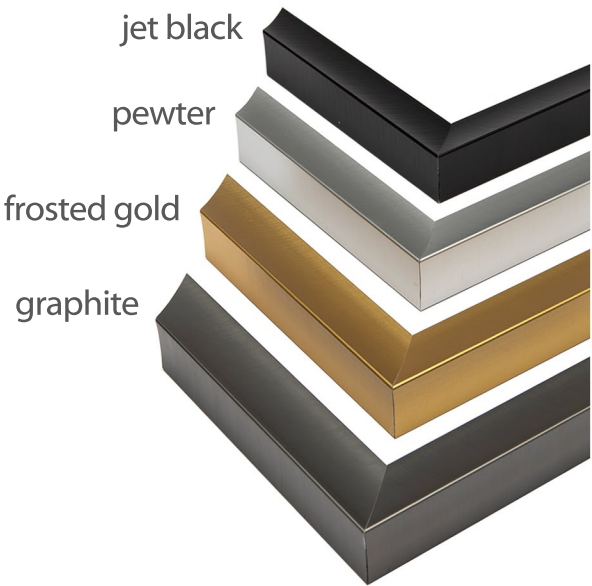
16x20
\$125

20x24
\$152

Hatteras Frame
2" Moulding



Avon Frame
1.25" Metal Moulding



Frame Group C

11x14
\$90

12x18
\$100

16x20
\$110

20x24
\$115

Duck Frame 1.5" Distressed Moulding



black

navy

white

mint

orange

teal

pink

light blue

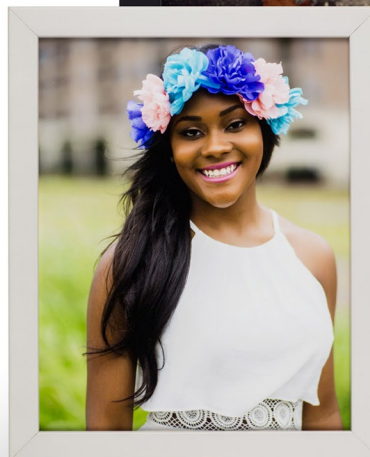
Kitty Hawk Frame 1.25" Slim (.75" depth) or Deep (1.25" depth) Moulding .75" Deep (1.25" depth) Moulding



black

white

grey



EXTRA FRAMING OPTIONS

MAT OPTIONS

Add a mat to your framed print.

Matted prints will have glare-resistant acrylic in front to protect from dust.

Choose either a Single or Double Mat in white, grey or black.

*Please note that adding a mat will change the finished size of your print
(for example, a matted 11x14 will have an 8x10 opening).*

11x14
\$35

12x18
\$40

16x20
\$50

20x24
\$65

FRAME SAMPLE KIT

Need to see them in person?

I'm happy to ship my frame samples to you so you can see
the moulding and colors in-person!

\$80 Deposit that will be applied to your order upon samples' return
+ \$20 shipping which includes pre-labelled return packaging and postage.
\$100

KEEPSAKE OPTIONS

DIGITAL COLLECTION

All the proofs from your sitting delivered on a USB Drive or via Direct Download from your Online Gallery. They are accompanied by a release so you can print, post to social media, etc. as you please. You will also qualify for exclusive pricing and access to print at my Professional Lab.
(see page __ for exclusive Digital Collection Client options!)

portraits

\$395

weddings

\$595

SINGLE DIGITAL FILE

A single image sent via email.

\$50

MEMORY ALBUM

This 20 page book showcases 1-2 images per page with a leather or linen cover. Printed on Archival, Matte Paper, the sturdy flush-mount pages create a seamless spread.

\$450

PROOF BOX

200 printed 4x6 proofs of your choice delivered in a cute presentation box.

\$350

PROOF PACKET

100 printed 4x6 proofs of your choice.

\$250

CARDS

PHOTO CARDS

I offer a variety of Photo Card Templates.
These 5x7 cards are printed by my professional lab on photo paper.
Select your image(s) and personalized salutation.
(Design is on one side; Envelopes are included)

set of 50

\$75

additional cards \$1.30 each

BOUTIQUE CARDS

My 5x7 Boutique Cards feature a 2-sided design and come in an array of paper options:
premium matte, artist linen, smooth stock or pearl paper upgrade.

Each layout is designed to work with
your image & greeting request; customization is limitless.
Extra add-on options such as rounded corners or double-thickness are also available!
(Envelopes are included)

set of 25

\$60

additional cards \$2.25 each

QUANTITY SUPERIOR PRINTS

Want to send a print with your card?
These are the same exceptional quality as my Superior Desk Prints with
extra retouching and editing.
There is a 50 print minimum/image for this pricing.
(Pricing is for 1 image/set; Envelopes NOT included)

4x6 set of 50

\$100

additional prints \$2 each

5x7 set of 50

\$200

additional prints \$4 each

FAQ

Can I make specific editing requests?

Absolutely! I am happy to take any editing/retouching requests for Superior Print Orders! Simply include your request in the special instructions section of your order, and I will let you know if I need your guidance while completing the final edits!

How long until I receive my order?

Turnaround time varies depending on what you have ordered.

Superior Prints take an average of 4 weeks to ship; mounted prints & canvases take longer as well as orders with more than 10 images *.

Proof Prints take an average of 1 week to ship *.

* Final delivery is determined by the product with the longest lead-time (for example, if you purchase Proof Prints and Superior Prints in the same order, the Proofs Prints will be held until your Superior Prints are ready to ship. For fastest delivery, you can opt to pay a separate \$10 shipping fee or place your orders separately.)

All orders are shipped via USPS Priority Mail or UPS/Fed-Ex 2-Day Delivery depending on your location.

I need my order ASAP! Can you help?

Yes! Rush delivery is available for an extra fee if you need your order to ship within 72 hours and/or expedited shipping with guaranteed delivery (subject to availability).

Please let me know when you place your order if there is a date you need your prints by; I can check the status of your order when it is at the lab but changes to shipping method and expediting orders becomes more difficult as time passes.

Can I buy the digital file from a Superior Print or Retouched Image?

No, my time spent editing and retouching my Superior Prints is a perk of ordering from me rather than elsewhere. I am happy to provide a low-resolution, watermarked image to my Digital Collection Clients for posting to social media and on-screen enjoyment! Just ask when you place your order!

I bought a Single Digital File; do I qualify for Digital Collection Client pricing?

Digital Collection Clients have made a significant investment by choosing to purchase all the images from their sitting. Access to our Professional Lab and exclusive pricing is a perk extended only to clients who have bought the entire Digital Collection.

My print credit expired before I used it; now what?

I'm happy to offer a 2 month grace period after your credit's expiration date during which I will honor half the credit's value (for example if you had \$50 credit, I will honor \$25.)

After the 2 month grace period, any unused credit will not be reimbursed or kept on file for future use.

GLOSSARY

SUPERIOR PRINT LINE - Image receives additional editing and retouching such as: removing people & distractions from the background, skin smoothing & blemish removal, retouching hair, as well as shadow softening and enhancing the colors even further. Extensive Retouching can be added to Superior Prints for a fee.

PROOF PRINT LINE - Image is printed as shown in your online gallery with no extra editing and retouching. Image is cropped and sharpened as needed.

DESK PRINTS - Loose (no mounting) lustre prints. Needs a frame.

SMOOTH MOUNT - Lustre print mounted on a styrene (smooth 3mm white plastic) backing with a protective lacquer coating. Needs a frame.

FINE ART CANVAS MOUNT - Image is printed directly to canvas and mounted on a styrene (smooth 3mm white plastic) backing with a protective lacquer coating. Needs a frame.

STRETCHED CANVAS - Image is printed directly to canvas and stretched around a 1.5" wooden frame so the image wraps around the edge. Sawtooth hanging hardware is installed for easy display. No frame needed.

WALLETS - Set of 2.5x3.5 lustre Proof Prints with rounded corners.

EXTENSIVE RETOUCHING - Retouching that involves manipulating/altering reality (further than my typical retouching which simply enhances what is there) i.e. head-swaps, braces removal, glasses tint removal, slimming.

DIGITAL COLLECTION CLIENT - A family or wedding client who has purchased the Digital Collection of all the images either by booking my Digital Portrait Session, Digital Mini Session, or by buying the Digital Collection a la carte afterward.



www.GingerSnapsPhotos.com

PO Box 2998

Kill Devil Hills, NC 27948

ORDER FORM

Event Name:		Date:
Shipping Name:		
Shipping Address:		
City:	State:	Zip Code:
Main Phone:	Other Phone:	
E-Mail:		

Pose	Size	Quantity	Print Type and Instructions	Price Each	Total

Comments & Special Instructions:

Subtotal	
Tax: 6.75%*	
Shipping: \$10	
Total	
Balance	

* The 6.75% Sales Tax is collected on all orders shipped/billed to a NC address. We must remit this tax to NC Revenue Department if your order is being shipping to a NC address or payment is being made from someone living in NC.